

# Where did my garden come from?

## References and maps

For an introduction to the geology of St Ives I would recommend: 'St Ives, Cambridgeshire, and the Great Ouse Valley' by Nick Barraud, Bob Burn-Murdoch and Peter Friend, 2013. Copies were for sale in the Norris Museum.

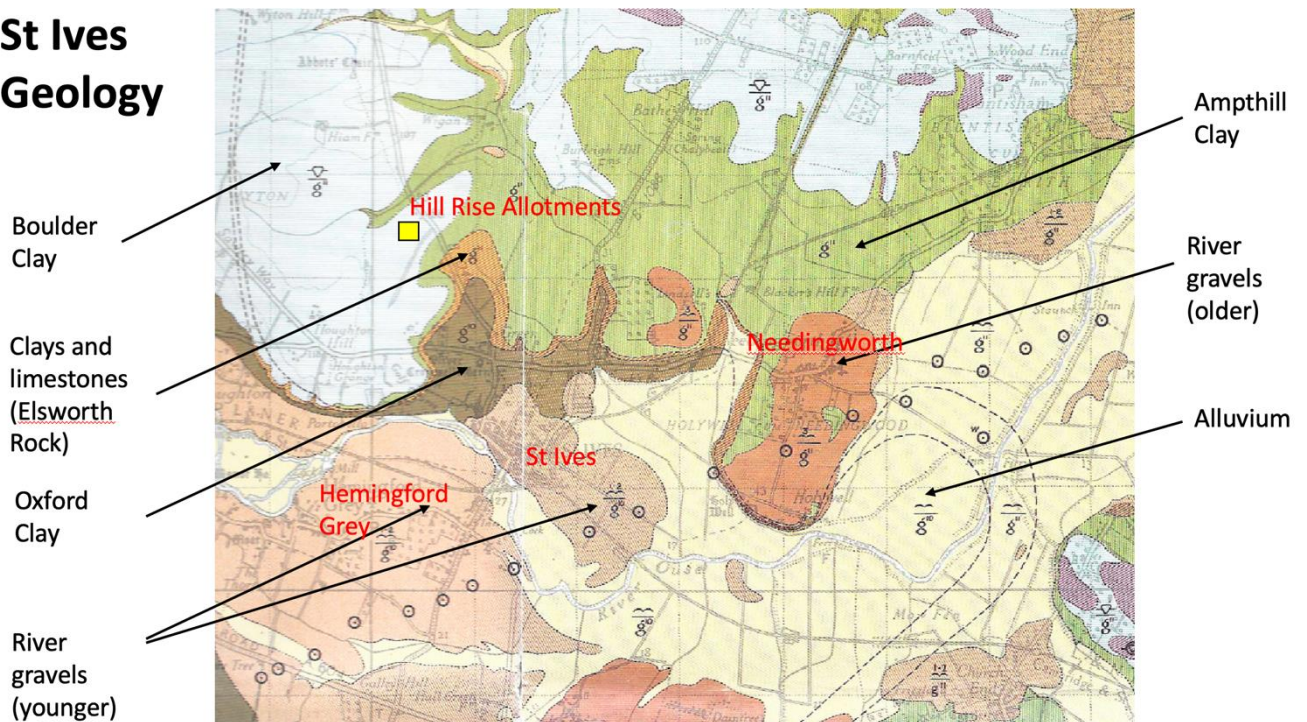
There is a little about Sarah Grace and the other major landowners of St Ives in Mary Carter's '19<sup>th</sup> Century St Ives' published by the Friends of the Norris Museum.

'Edmund Pettis's Survey of St Ives, 1728' is edited by Mary Carter. It is Volume 16 of the Cambridge Records Society. A google search will find it.

If you want to explore old maps of St Ives, this is the best website <https://maps.nls.uk>

And here are three of the maps from my talk.

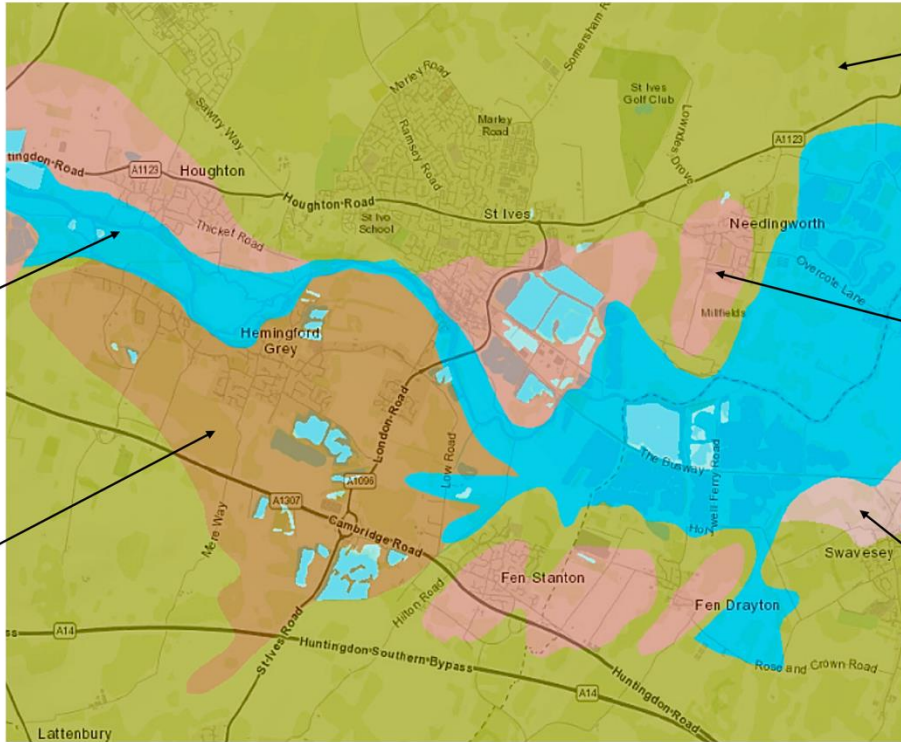
## St Ives Geology



## St Ives Soil Types

**Soil 5** Loamy and clayey floodplain soils with naturally high groundwater

**Soil 4** Freely draining, slightly acidic but base-rich soils



**Soil 1** Lime-rich loamy and clayey soils with impeded drainage

**Soil 2** Freely draining, slightly acidic loamy soils

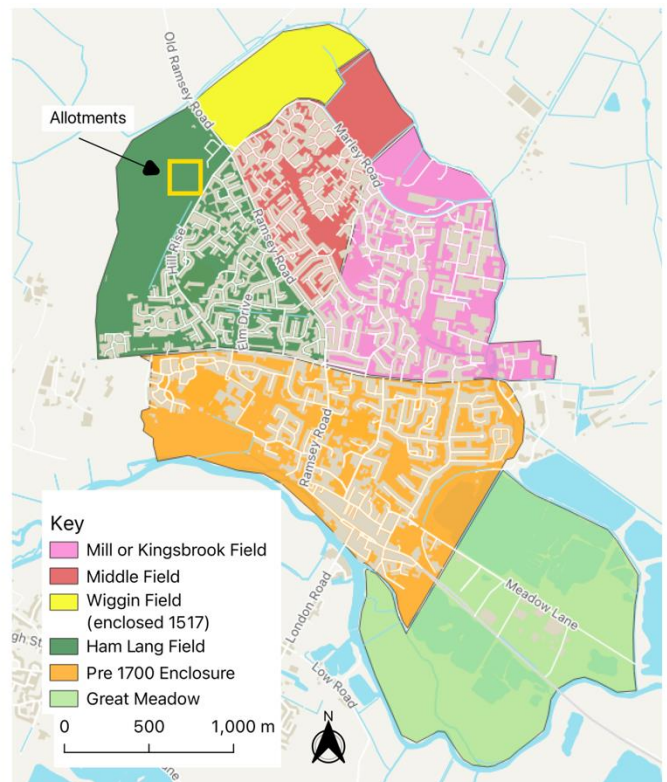
**Soil 3** Freely draining, lime-rich loamy soils

Source: UK Soil Observatory  
<https://mapapps2.bgs.ac.uk/ukso/home.html>

## How was the land organised?

The open field system.

A three-year rotation: wheat or barley; peas or beans; fallow.



The open fields were created in the medieval period and continued in existence until the land was fully enclosed in 1807-8.